



# Clunes

## Local Flood Guide

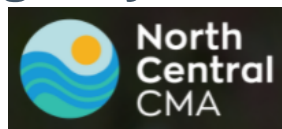
Riverine /Flash flood/ information for the Creswick creek at Clunes



Photo source 2010: David Kinloch Clunes CFA



For flood emergency assistance call VICSES on



132 500



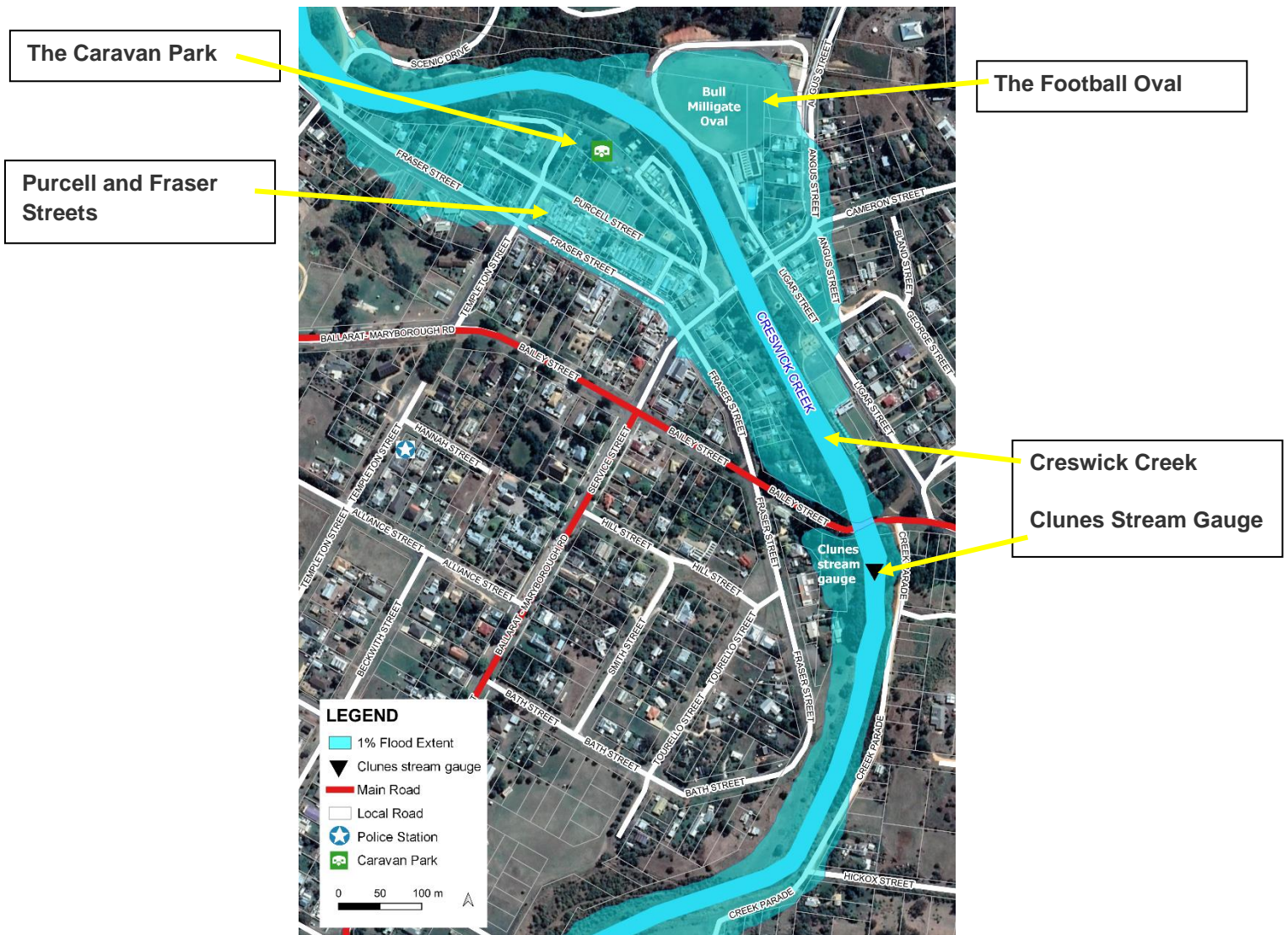


### Clunes

Clunes is situated on the Creswick Creek, approximately 30 kms north of Ballarat and 20 kilometres west of the township of Clunes. Clunes is known for farming areas and forests which is part of the Creswick Creek Catchment. This also inhabits surrounding areas of Glendaurel, Learmonth, Coghills Creek, Allendale, Dean, Wattle Flat and Glen Park. Depending on the location and intensity of rainfall within the catchment, the level of Creswick Creek within Clunes can rise suddenly without significant rainfall in the upper catchment.

When Creswick Creek floods, low-lying areas in Clunes are impacted including.

- Purcell and Fraser Street
- The Football Oval
- The Caravan Park



#### Disclaimer

This map publication is presented by Victoria State Emergency Service for the purpose of disseminating emergency management information. The contents of the information have not been independently verified by Victoria State Emergency Service. No liability is accepted for any damage, loss or injury caused by errors or omissions in this information or for any action taken by any person in reliance upon it. Flood information is provided by North Central Catchment Management Authority.





## Are you at risk of flood?

Within the township of Clunes, there are numerous homes, businesses, and properties at risk from floods. Creswick Creek is prone to flash flooding which results from heavy rainfall over a short period of time overwhelming the creek's capacity. When Creswick Creek floods, low-lying areas in Clunes are impacted.



- Purcell Street creek side properties maybe affected.
- Southern side of Fraser Street between Templeton and Camp Streets, potentially inundating commercial buildings.
- The Clunes Magpies Football Netball Club
- The Clunes Caravan Park
- Bowling club on Service Street

## Did you know?

Following the September 2010 and January 2011 floods, mitigation works have been undertaken to remove exotic trees and weeds from Creswick Creek to reduce the expected level of floodwater through Clunes.



Photo source 2011: Andrew Pickford (Historical Society) - Clunes Football Oval.

During the January 2011 flood, 200 millimetres of rain fell over four days, causing:

- Drains along Service Street, Templeton Street, Fraser Street and Purcell Street to overtop.
- Flooding reaching 4.48m impacts the football oval and at least 23 nearby properties.
- Flooding of low-lying properties near Camp Street and the site of the old Butter Factory at the start of Cameron Street.
- Floodwater breaking out of the creek bank at the caravan park, resulting in water flowing towards the Ballarat-Maryborough Road.
- Water to overtop Ligar Street, inundating the swimming pool, sports stadium and properties along the lower end of Fraser Street.
- The Service Street Bridge to overtop, inundating Service Street and part of the bowling club.

The 2011 flood measured 6.39m height at the Clunes gauge on Creswick Creek caused:

- Impact likely to be 52 properties affected with 21 properties flooded above floor.
- Impact e.g. possible road closures including Fraser, Ligar, Purcell Streets.

Stormwater flooding can develop quickly in Clunes from heavy localised rainfall in local waterways. Rapid rises in floodwater in local waterways and Creswick Creek can occur within 0.5-6 hours from rainfall. The floodwater peak may occur within 12-18 hours from rainfall. During January 2011 event the peak travel time was 4 hours and during the September 2010 flood the travel time was 6 hours.



**No two floods are the same. Floods like this or worse could occur again.**

**If you live in a low-lying area you may be at risk of flooding or need to detour around flooded areas.**

**Knowing what to do can save your life and help protect your property.**

[Sandbag Collection Point](#)

**A Sandbag Collection Point may be opened at the local CFA Station, Alliance Street Clunes.**

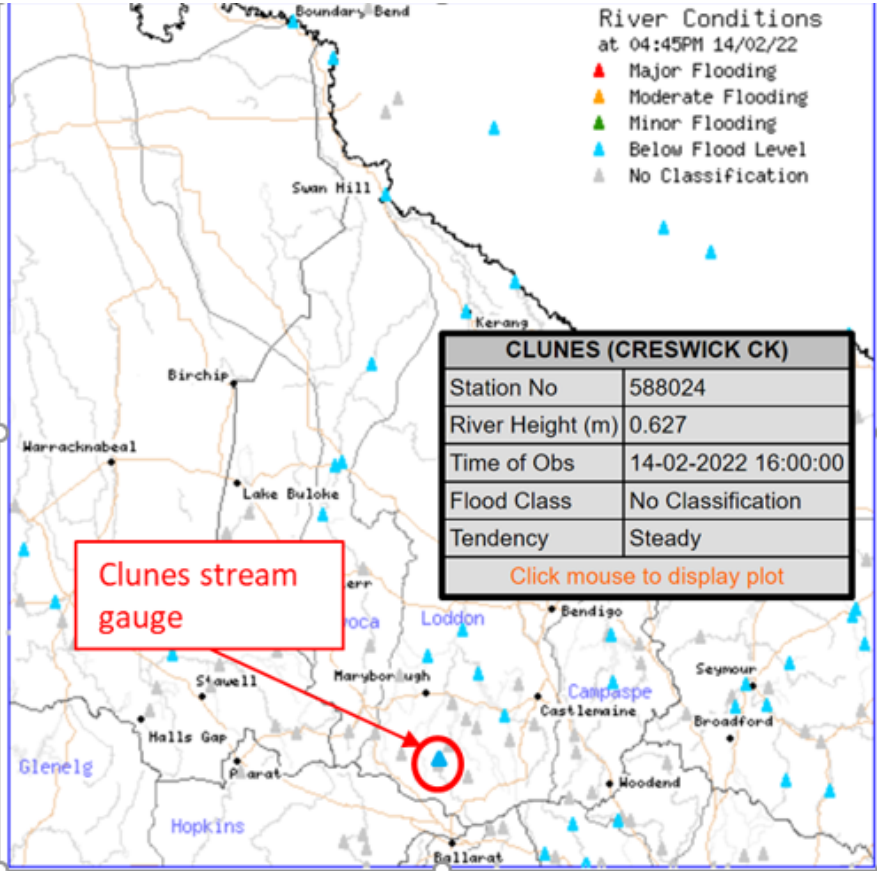
**Hepburn Shire Council will promote when this collection point is opened after a flooding event through local radio, newspaper, and other media.**



### Creswick Creek flood levels at the Clunes gauge

There is a stream gauge along Creswick Creek at Clunes that can be used to provide early clues of possible early flooding. The Bureau of Meteorology (BoM) does not issue river height predictions for Clunes. To monitor Clunes stream Gauge height, go to the BoM website [bom.gov.au/vic/flood/](http://bom.gov.au/vic/flood/)

- Select 'River Conditions' (above the map)
- Click on North Central on the right.
- Find the Clunes (Creswick Creek) gauge and hover over it.
- Compare stream height to the stream gauge heights in the table below to determine if flooding is likely.



Clunes stream gauge Height (metres)	Flood impact
7.62	An additional 13 buildings are flooded above floor, including the Senior Citizens Centre in Fraser Street.
	Proposed Major flood level
7.10m	Water overtops in Fraser Street between Templeton and Service Street, flooding commercial shops and buildings. An additional 18 properties (total of 70) are affected and up to 44 of these buildings are flooded. above floor. Height shown map page 2
6.67m	Properties along Fraser, Ligar and Purcell Streets, the caravan park and lower bowling green are flooded. There are likely to be 52 properties. affected, with 21 of these buildings flooded above floor. Deep flooding cuts access to Angus Street and Ligar Street.
	Proposed Moderate flood level
6.63m	January 2011 flood. 200 millimetres of rain fell in four days. Slightly deeper water than September 2010 flood event, same areas impacted as September 2010. Service Street Bridge was overtopped by water, bowling club flooded and water impacted the commercial buildings. along Fraser Street
5.36m	September 2010 flood. During this flood, 85.4 millimetres fell over two days. Flooding impacted Purcell Street, the sports stadium, caravan park and many properties between the creek and Fraser Street.



Clunes stream gauge Height (metres)	Flood impact
	Proposed Minor flood level
4.48m	At least 23 properties are impacted by widespread flooding downstream of Service Street including the old Butter Factory, football oval and swimming pool. Deep flooding cuts access to Purcell Street, West Parade and Fraser Street
3.46m	Creswick Creek is at full capacity and close to breaking its banks.



Photo source 2011: Creswick Creek Gauge, Clunes.

### Staying Informed and Further Information

- Current warnings (VicEmergency) [emergency.vic.gov.au](https://emergency.vic.gov.au) 1800 226 226
- Bureau of Meteorology (BoM) [bom.gov.au/vic/warnings](https://bom.gov.au/vic/warnings) 1300 659 217
- VicRoads Traffic [traffic.vicroads.vic.gov.au](https://traffic.vicroads.vic.gov.au)
- Emergency Broadcasters
  - ABC Radio 774 AM or 107.9FM
  - Voice FM 99.9 FM
  - 3BA Radio 102.3 FM
  - Power FM 103.1 FM
  - SKY NEWS Television
- VICSES Social Media
  - [facebook.com/vicses](https://facebook.com/vicses)
  - [twitter.com/vicsesnews](https://twitter.com/vicsesnews)
- Preparing for Flood Emergencies [ses.vic.gov.au/get-ready](https://ses.vic.gov.au/get-ready)
- Creating an Emergency Plan [redcross.org.au/prepare](https://redcross.org.au/prepare)
- North Central Catchment Management Authority [www.nccma.vic.gov.au](https://www.nccma.vic.gov.au) 03 5448 7124
- Hepburn Shire Council [www.hepburn.vic.gov.au](https://www.hepburn.vic.gov.au) 03 5348 1633

**Life-threatening  
Emergency**




**000**



# Flood warnings and emergency checklist

A **Flood Watch** means there is a developing weather pattern that might cause floods in one or two days. This service covers the whole state.

A **Flood Warning** means flooding is about to happen or is already happening. There are minor, moderate and major flood warnings. This service is only available where flood warning systems are in place.

 A Minor Flood Warning means floodwater can:	 A Moderate Flood Warning means floodwater can:	 A Major Flood Warning means floodwater can:
Spill over river banks and cover nearby low lying areas.	Spill over river banks and cover larger areas of land.	Cause widespread flooding.
Come up through drains in nearby streets.	Reach above floor levels in some houses and buildings.	Many houses and businesses are inundated above floor level.
Require the removal of stock in some cases.	Require evacuation in some areas.	Cause properties and whole areas to be isolated by water.
Cover riverside camping areas and affect some low-lying caravan parks.	Affect traffic routes.	Closes major roads and rail routes.
Cover minor roads paths, tracks and low level bridges.	Require the removal of stock in rural areas.	Require many evacuations.
Affect backyards and buildings below floor level.		Affect utility services (power, water, sewage etc).

## Severe Thunderstorm Warnings

Thunderstorms are classified as severe when there is potential to cause significant localised damage through wind gusts, large hail, tornadoes or flash flooding. Severe Thunderstorm Warnings are issued to the community by BoM.

## Severe Weather Warnings

These warnings are issued to the community by BoM when severe weather is expected that is not directly related to severe thunderstorms or bushfires. Examples of severe weather include damaging winds and flash flooding.

## Flash Flooding

- Flash Flooding can occur quickly due to heavy rainfall. You may not receive an official warning.
- Stay informed- monitor weather warnings, forecasts and river levels at the [BoM website](#) and warnings through [VicEmergency](#).



### VICSES Warnings

VICSES utilises the VicEmergency app, website and hotline to distribute flood warnings and emergency information in Victoria. Communities can also access this information through VICSES social media channels and emergency broadcasters.

VICSES warnings aim to provide you with information to help you make good decisions to protect yourself and your family

The warning level is based on severity, conditions and the likelihood that the emergency could impact on the community.

WARNING LEVELS	
	<p><b>EMERGENCY WARNING</b></p> <p>You are in imminent danger and need to take action immediately. You will be impacted. A Major flood warning usually fits into this category</p>
	<p><b>WARNING (WATCH AND ACT)</b></p> <p>An emergency is developing nearby. You need to take action now to protect yourself and others. A Moderate flood warning usually fits into this category.</p>
	<p><b>ADVICE</b></p> <p>An incident is occurring or has occurred in the area. Access information and monitor conditions.</p> <p>Can also be used as a notification that activity in the area has subsided and is no longer a danger to you. A Minor flood warning or Flood Watch usually fits into this category.</p>

ADDITIONAL MESSAGES	
	<p><b>PREPARE TO EVACUATE/ EVACUATE NOW</b></p> <p>An evacuation is recommended or procedures are in place to evacuate.</p>
	<p><b>COMMUNITY INFORMATION</b></p> <p>A newsletter containing updates for communities affected by an emergency.</p> <p>Can also be used as a notification that an incident has occurred but there is no threat to community.</p>
	<p><b>EMERGENCY ALERT</b></p> <p>During some emergencies, we may alert communities by sounding a local siren, or by sending an SMS to mobile phones or a voice message to landlines.</p>

### Your emergency plan

Emergencies can happen at any time and with little warning. People who plan and prepare for emergencies can reduce the impact and recover faster.

Taking the time to think about emergencies and make your own plan helps you think clearly, have more control and make better decisions when an emergency occurs.

Visit [redcross.org.au/prepare](http://redcross.org.au/prepare) start creating your plan.



- Remember, you may not receive any official warning.
- Emergency assistance may not be immediately available. Be aware of what is happening around you to stay safe.
- Never wait for a warning to act.





## Emergency Kit

Visit [Emergency Toolkit](#) for more information



Every home and business should have a basic emergency kit with supplies for 3 days:



Check your kit often. Make sure things work. Replace out of date items.

When a warning is issued, have ready for use or pack into your kit:

### I need to add:

Write your list here. Tick items as you pack them into your kit.

Special needs (eg, babies, elderly and people with a disability)	
Photos	
Family keepsakes	
Valuables	
Other	





## Emergency Checklist

- Check if your insurance policy covers flooding.
- Keep this list of emergency numbers in your mobile phone.
- Download the Vic Emergency app on your mobile phone.
- Put together an emergency kit and prepare a home or business.
- Emergency plan, see <https://www.redcross.org.au/prepare>



### Before Flooding

- Leaving early before flooding occurs is always the safest option. Evacuating through floodwater is very dangerous and you may be swept away.
- Stay informed- monitor weather warnings, forecasts and river levels at the <http://www.bom.gov.au> and warnings through [www.emergency.vic.gov.au](http://www.emergency.vic.gov.au)
- Secure objects likely to float and cause damage.
- Listen to the radio and check the VICSES website for information and advice.
- Go over your emergency plan. Pack clothing and other extra items into your emergency kit and take this with you if you evacuate.

### During Flooding

- Make sure your family members and neighbours are aware of what is happening.
- Conditions change rapidly; roads and escape routes can be covered or blocked.
- Put household valuables and electrical items as high as possible.
- Turn off water, gas and electricity at the mains.
- If you are staying in a caravan, move to higher ground before flooding begins.
- Seek shelter indoors, away from floodwater.
- If floodwater comes inside, move to a higher point such as a kitchen bench or second storey.
- Stay away from trees, drains, low-lying areas, creeks, canals, culverts and floodwater.

### Evacuating in Flooding

- Flood water is dangerous. Never enter floodwater. It can take just 15cm of water to float a car.
- Find alternative travel routes if roads or underpasses are flooded.
- Be aware of driving hazards, such as mud, debris, damaged roads and fallen trees. If driving conditions are dangerous, safely pull over away from trees, drains and floodwater.

### After Flooding

- For recovery information, contact your local council, go to the VicEmergency Relief and Recovery-[emergency.vic.gov.au/Relief](http://emergency.vic.gov.au/Relief) page or call the VicEmergency Hotline (1800 226 226).
- Have all electrical and gas equipment professionally tested before use.
- Stay away from damaged and flooded buildings, fallen trees and powerlines and damaged roads until authorities advise it is safe to do so.
- Drive slowly, obey all road signs and never drive through floodwater.
- When cleaning, protect your health and safety. Wear strong boots, gloves and protective clothing and wash your hands and clothes regularly.

For VICSES emergency assistance,  
call **132 500**, or **Triple Zero (000)**  
in life threatening emergencies.